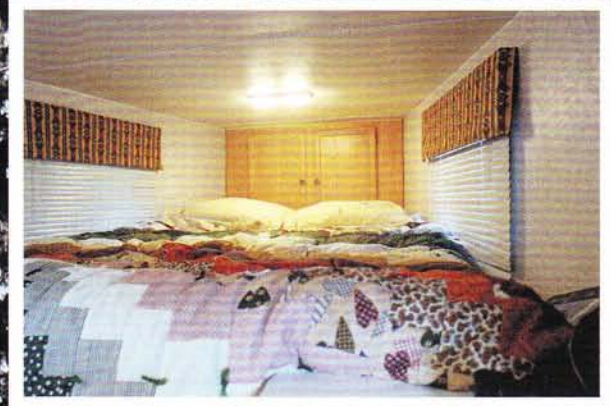


LIVING QUARTERS

by ALUM-LINE



"Where Workmanship Lasts A Lifetime"

AT THE END OF THE DAY YOU'LL

LIVING QUARTERS THAT OFFER

Comfort, Class, and Quality... That's What You Get With ALUM-LINE Living Quarters For Your Trailer

For over 25 years ALUM-LINE has set the bar in All-Aluminum Trailers. Now... ALUM-LINE raises that bar with what's arguably the finest Living Quarters in the industry.

**Quality, Style
Affordability...**

This is a combination that's hard to beat and it's brought to you by ALUM-LINE. We offer the owner choices that will personalize his or her Living Quarters and will fit the owner's needs perfectly. Everytime.

Just like those custom-made boots, but without the custom made price. Take care of yourself as good as you take care of everything else. Specify ALUM-LINE Living Quarters.

"Where Workmanship Lasts A Lifetime"



We also do a full line of hauler bodies. Call for more information.



The kitchen is easily accessible and well laid out. Even little helpers have room to get into the act.



Sleeping quarters above the nose include side windows and front cabinet storage.



The dining area seats four and has plenty of room for everyone to stretch out. Wardrobe cabinet to right and additional storage under seating.



ALUM-LINE, INC.

Let Our 26 Years
Of Experience
Work For You!



Another popular feature that takes great care of you.



Add a different color to create your own look.



Even our bumper hitches are efficient.



Trailers built up to 16 feet high for even larger interiors.

BE GLAD IT'S AN ALUM-LINE

ER GREAT VALUE & COMFORT



ar set up is our V-Shaped configuration
t advantage of the interior shape.



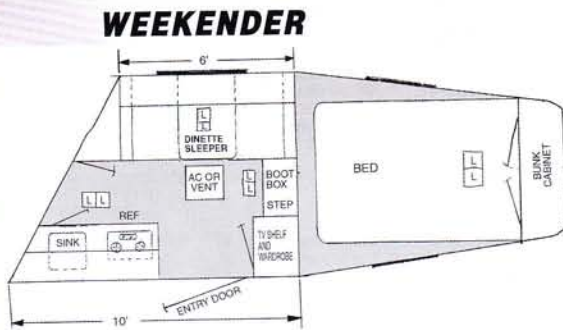
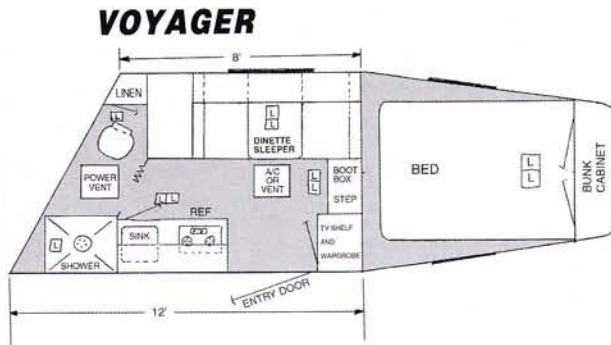
color side sheet to
n unique look.



per pulls provide room
living quarters layout.



5' x 40' lengths allow for an
rior package.



**Weekender Kitchenette With
Cupboards**



**Voyager Kitchen & Door
To Cargo Area**



**Mini Weekender
Package in 4' x 8'
dressing room**

**Standard Dinette
& Cabinets**

Voyager by ALUM-LINE gives you efficient and beautiful use of space. All of the components are first class. No particle board and cheap paneling used here.

All appliances are first quality as are the mattresses and bed areas. Top grade through and through. Like all ALUM-LINE products, Voyager Living Quarters are built to suit the exact needs of the customer with one thing in mind... Total comfort and total customer satisfaction.

Weekender by ALUM-LINE gives you efficient and beautiful use of space in a smaller area. No unnecessary waste and everything within easy reach. All of the components are first class. Just the ticket for those overnight trips with many important essentials.

Smaller in size but big in features... Weekender gives you everything you need and then some. Like all ALUM-LINE trailers with Living Quarters, Weekender has the necessities thoughtfully laid out and you can add options that will fit your style and needs. Again, Total Customer Satisfaction is our pledge to you.

Whatever you haul...

- Livestock
- Commercial
- Your Work
- Exhibits
- Educational
- Governmental
- Military
- And More

**Call Our Toll Free Order Line Today:
1-800-446-1407**

LIVING QUARTERS

SPECIFICATIONS

Note:

Weekender Package

Specifications based on 6' Short Wall and 10' Long Wall .

Voyager Package

Specifications based on 8' Short Wall and 12' Long Wall.

Color Choices:

Cadet Blue Fabric With White Decor Walls, or
Chickadee Green Fabric With White Decor Walls.
Natural Oak Finished Cabinetry.

Options List:

- Mattress
- Outside LP Grill
- Audiovox AM/FM Cassette W/Four Speakers
- Norcold 2 Way Refrigerator (3 cu. ft.)
- 12' A&E Awning
- Dometic 13,500 BTU Roof Air W/ Heat Strip
- Suburban 16,000 BTU Furnace (Not Available On Weekender)
- Winegard TV Antenna W/ Booster
- Straight Wall Models Available

FEATURES SUBJECT TO CHANGE WITHOUT NOTICE

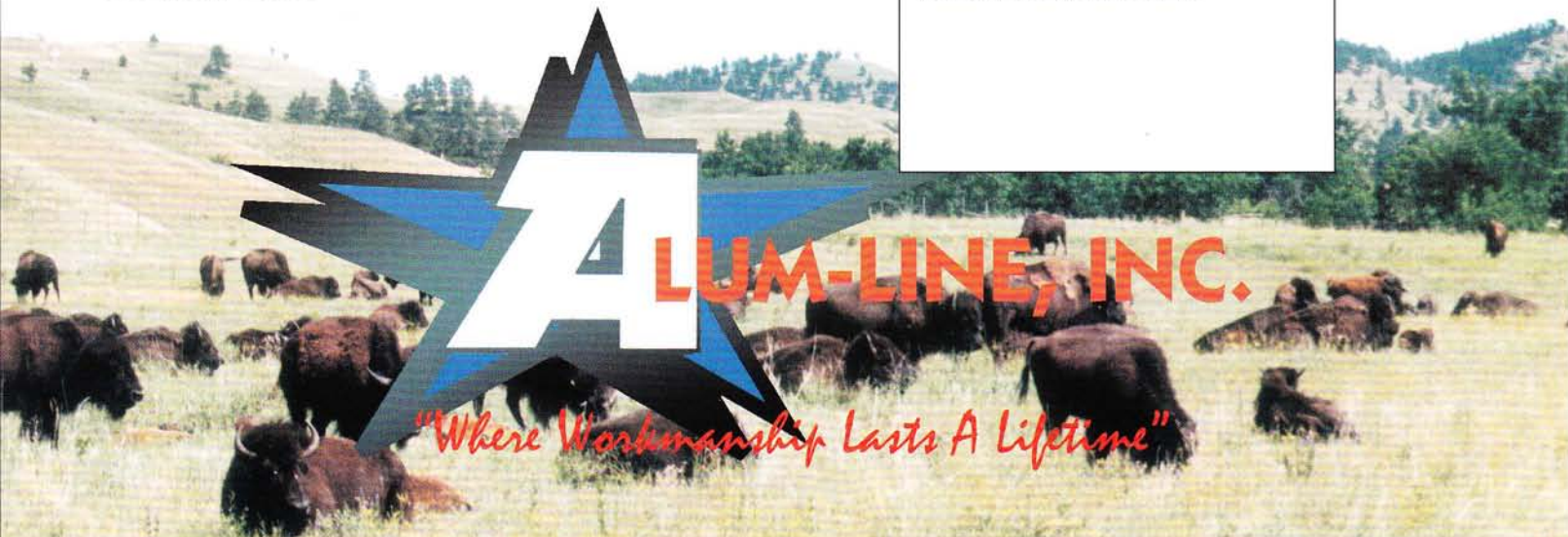


FEATURES	WEEKENDER	VOYAGER
LIVING AREA		
Oak Framed Cabinet Doors	Standard	Standard
Wood Grain And/Or Deco Paneling	Standard	Standard
Mini Blinds Throughout	Standard	Standard
2 Door Bunk Cabinet Across Front	Standard	Standard
Insulated Walls & Ceiling	Standard	Standard
Congoleum Vinyl Flooring	Standard	Standard
Carpeted Bunk	Standard	Standard
Complete Ceiling, Floor & Wall Prep	Standard	Standard
Dinette Sleeper	Standard	Standard
Carpeted Boot Box	Standard	Standard
Mattress	Optional	Optional
AM / FM Cassette W/4 Speakers	Optional	Optional
KITCHEN AREA		
Overhead Cabinet Door Above Counter	Standard	Standard
Overhead Cabinet Above Dinette	Standard	Standard
Microwave Oven	Standard	Standard
2 Burner Cooktop W / Cover	Standard	Standard
110V Refrigerator	Standard	Standard
2 Way 3 Cu. Ft. Refrigerator	N/A	N/A
Single Sink W / Rocker Pump Faucet	Standard	N/A
Double Stainless Steel Sink	N/A	Standard
Rangehood W / Light & Fan	N/A	Standard
WINDOWS		
All Windows Include Screens & Sliders		
2 19 x 26 Windows In Nose (1 Kick Out)	Standard	Standard
24 x 30 Picture Window	Standard	Standard
24 x 15 Kitchen Window	Optional	Optional
24 x 36 Picture Window (Add \$50.00)	Optional	Optional
25 x 48 Picture Window (Add \$100.00)	N/A	Optional
All Windows Have Optional Sizes Available		
ELECTRICAL SYSTEM		
20 Amp Converter W / Charger	Standard	N/A
32 Amp Converter W / Charger	N/A	Standard
Electric Cord Hatch W / Lock	Standard	Standard
25 Ft. Power Cord	Standard	Standard
Heavy Duty Marine Battery	Standard	Standard
Interior Vented Battery Box	Standard	Standard
Euro Style Interior Lighting	Standard	Standard
Porch Light	Standard	Standard
Roof Air Conditioning Wire	Standard	Standard
TV Antenna W / Booster	N/A	Optional
PLUMBING SYSTEM		
Includes Toilet & Shower	N/A	Standard
12 Gallon Fresh Water Tank	Standard	N/A
30 Gallon Fresh Water Tank	N/A	Standard
12 V On Demand Water Pump	N/A	Standard
City / Water Full Hatch W / Lock	N/A	Standard
Black Water Holding Tank	N/A	Standard
6 Gallon Water Heater	N/A	Standard
BATHROOM FEATURES		
Shower Stall & Surround	N/A	Standard
Hand Flush Toilet	N/A	Standard
Towel Bar & Toilet Paper Dispenser	N/A	Standard
Linen Closet	N/A	Standard
Ventline Power Roof Vent	N/A	Standard
COMFORT FEATURES		
12' A&E Awning	Optional	Standard
13,500 BTU Roof Air W / Heat Strip	Optional	Optional
1-20# LP Tank	Standard	N/A
2-20# LP Tank	N/A	Standard
16,000 BTU Furnace	N/A	Optional
SAFETY FEATURES		
Fire Extinguisher	Standard	Standard
Smoke Detector	Standard	Standard
LP Detector	Standard	Standard

Visit Our Web Site At: www.alum-line.com
P.O. Box 59 • Cresco, Iowa 52136
On Highway 9 West

Call Our Toll Free
Order Line Today:
1-800-446-1407

YOUR AREA DEALER



ALUM-LINE, INC.

"Where Workmanship Lasts A Lifetime"